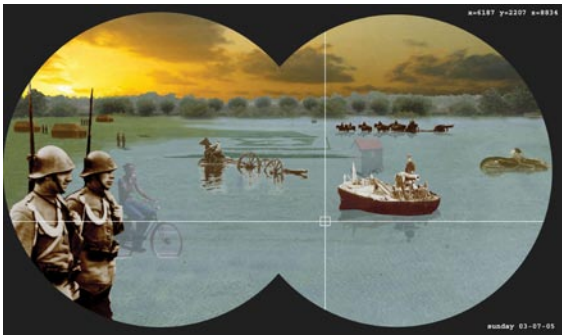
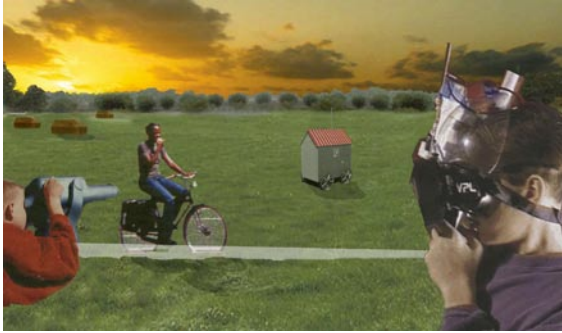


NEW DUTCH WATERLINE

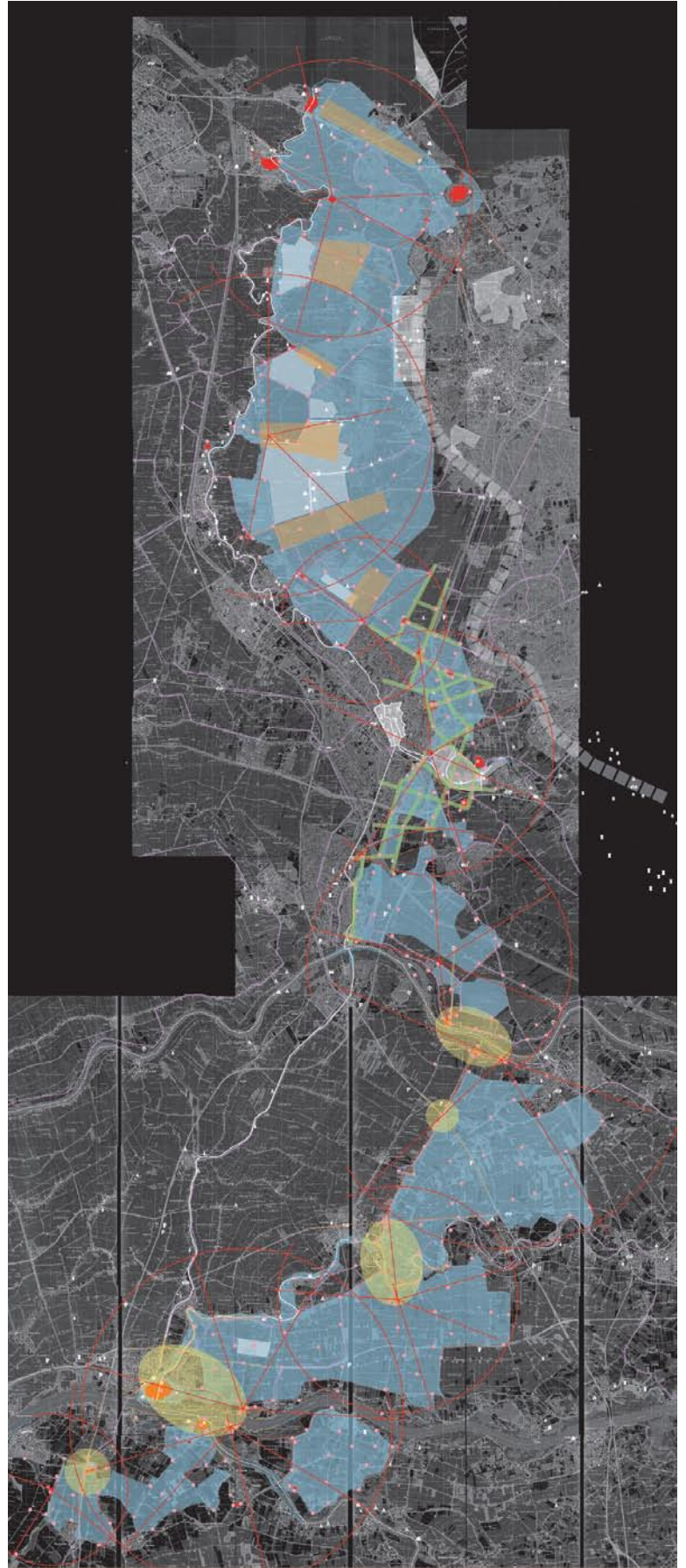


Level 1

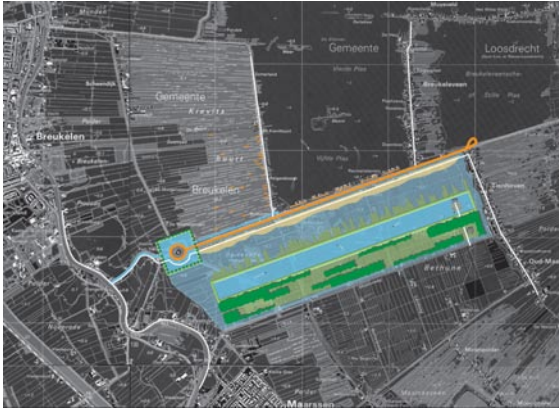
With line-visioners the defence-line becomes virtually inundated. It shows the events that happened in the landscape. The line-visioners, a helmet with special spectacles that picks up signals from the small sign-posts in the field, are for rent. People without helmet have no clue what is going on. Like in the old days, when non-military people couldn't see the defence-line either. The helmeted hordes of tourists keep the mystery alive.

Project: Recreational scenario New Dutch Waterline
 Client: National Government - Project office NHW
 Location: The Netherlands
 Area: 273 km²
 Duration: 2001
 Status: Ratified and published
 Partners: OKRA landscape architects

Recreation-economical scenario for the development of the 80 km historic important New Dutch Water-defence-line (nominee UNESCO world heritage list).



Level 2
 Within the line
 coherent larger
 scale recreational
 developments
 connect the mili-
 tary past with the
 current recreati-
 onal profile of each
 area.



Level 3
 The local network
 of recreational
 paths is improved.
 The sign-posts
 add small scale
 recreational fa-
 cilities (maps,
 tyre-repare-kit,
 water), improving
 the comfort.