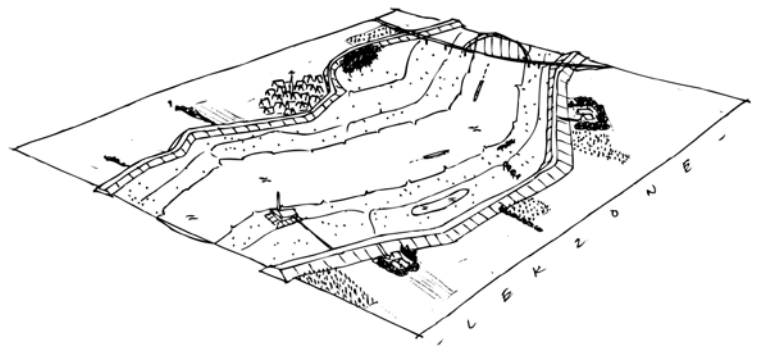


QUALITY GUIDE NATIONAL LANDSCAPES

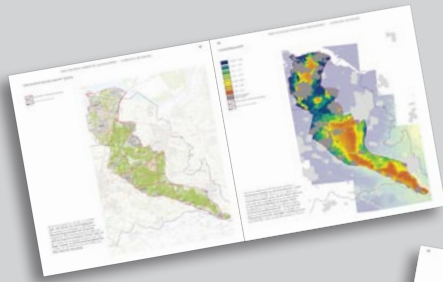


Project: Quality guides for National Landscapes
Client: Province of Utrecht
Location: Utrecht - The Netherlands
Area: 1449 km².
Duration: 2009-2010
Status: Ratified.
Partners: OKRA landscape architects



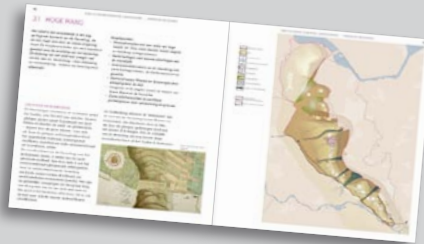
Guidelines for all likely developments in all landscapes of the province of Utrecht, including five National Landscapes and one UNESCO world heritage landscape.

PART 1. OBSERVATIONS



1.1 Factual landscape

Maps and descriptions of the landscape in various themes.



1.2 Narrative landscape

In a bird's-eye view the development of the landscape is shown, followed by four story-lines that are characteristic for this landscape. The stories tell the special events that explain the landscape and enrich the perception and experience.



1.3 Dynamics

All spatial developments that are going on in the National Landscape are mapped.

PART 2. VALUATION

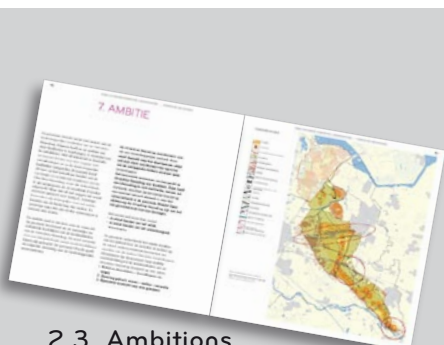
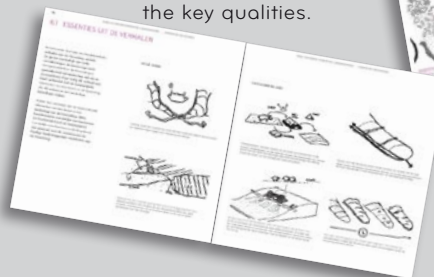


2.1 Key qualities

Description of the key qualities, the base for the value-based analysis.

2.2 Visual landscape

First is specified how the narrative landscape is connected to the key qualities. Then the spatial characteristics are analysed, in one image and five icons. Sub-areas are distinguished, their cohesion is indicated and this all is related back to the key qualities.



2.3 Ambitions

At some points the key qualities in the National Landscape are under pressure. Ambitions are formulated to improve the key qualities and focus the available resources of the province.



2.4 Deepening sub-landscapes

The five essential icons are further specified for the different sub-areas. They are followed by design-principles, which show how developments in these areas can be given form so that they fit in with and strengthen the landscapes key qualities.